

Disease Surveillance with Vaccine Preventable Diseases

Randy Bergen MD
Clinical Lead KPNC Flu
Vaccine Program

Surveillance

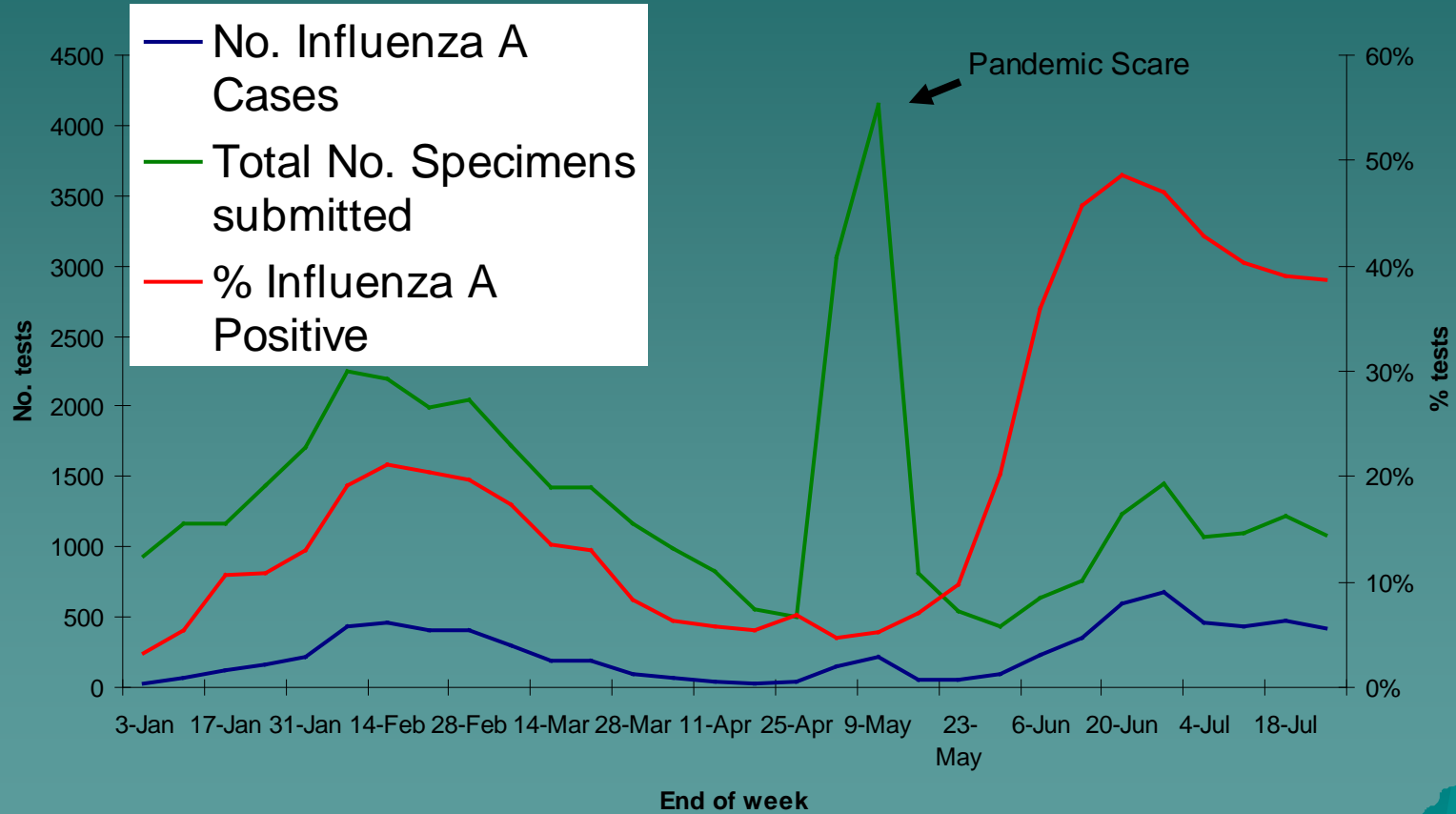
What it can accomplish

- ◆ Informs providers- timely and appropriate medical care
- ◆ Informs policy makers- timely and appropriate public health decisions
- ◆ Informs the public- help is deciding when to seek medical advice and care

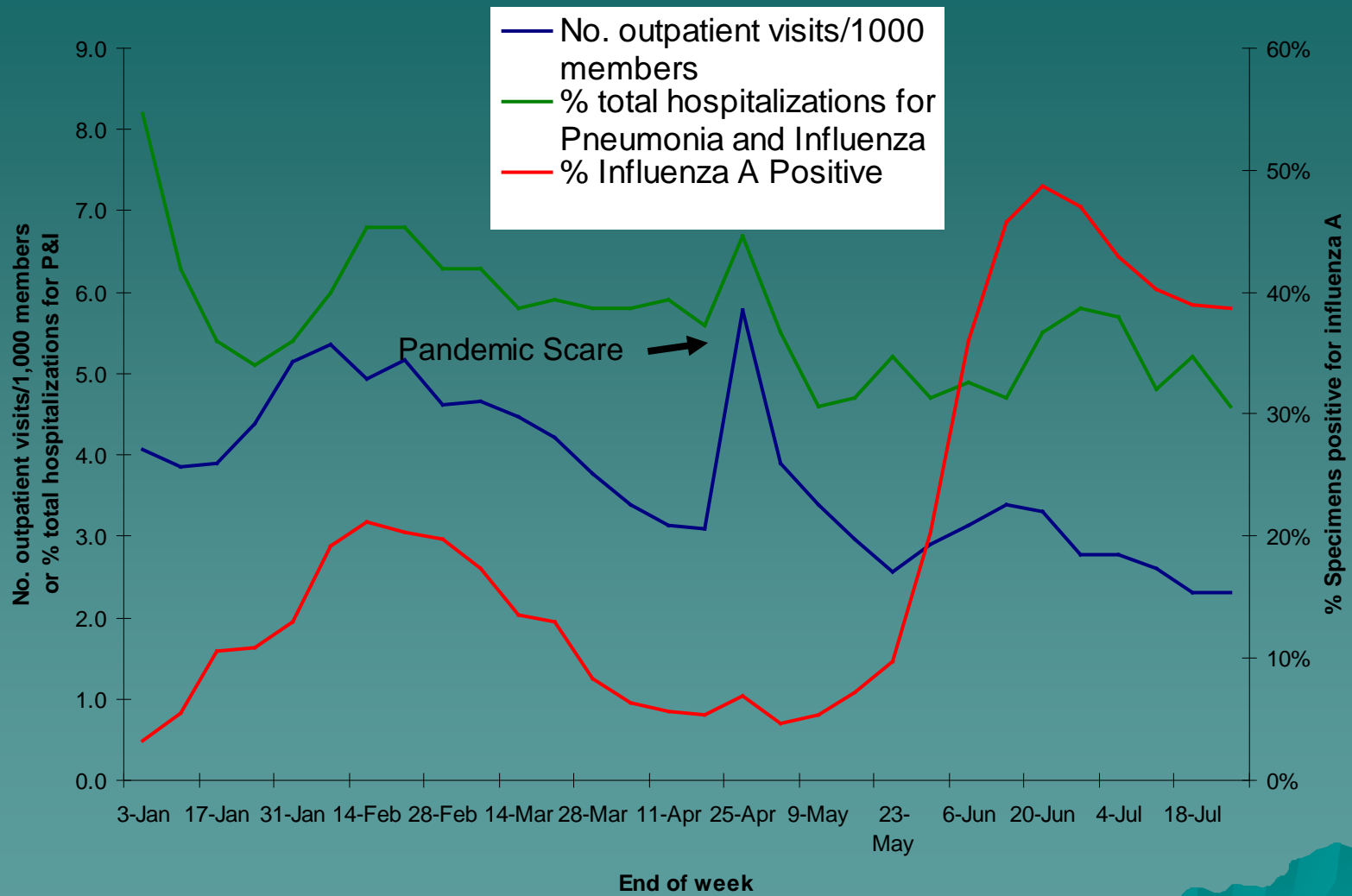
Flu Surveillance 2009

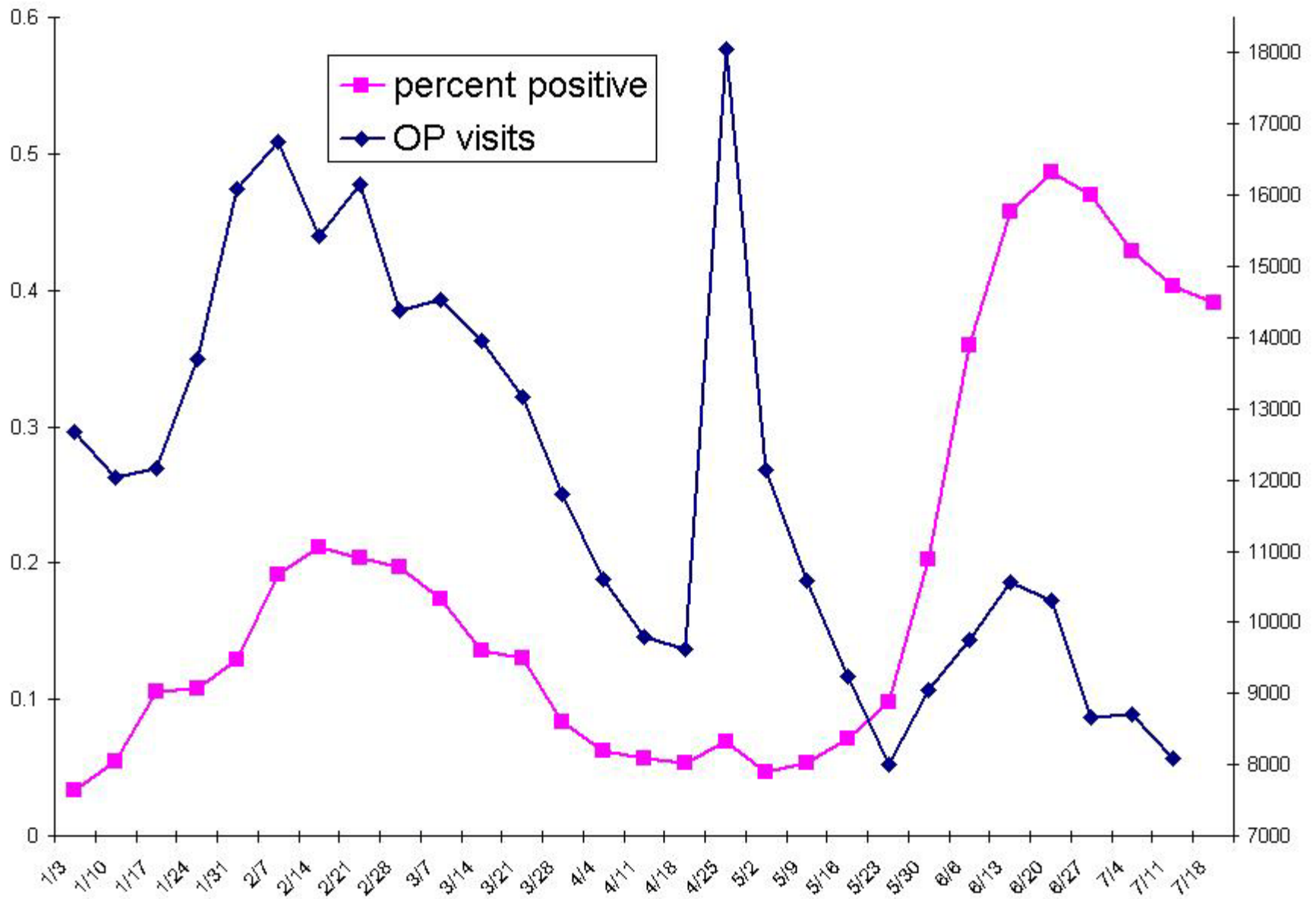
- ◆ KPNC Data

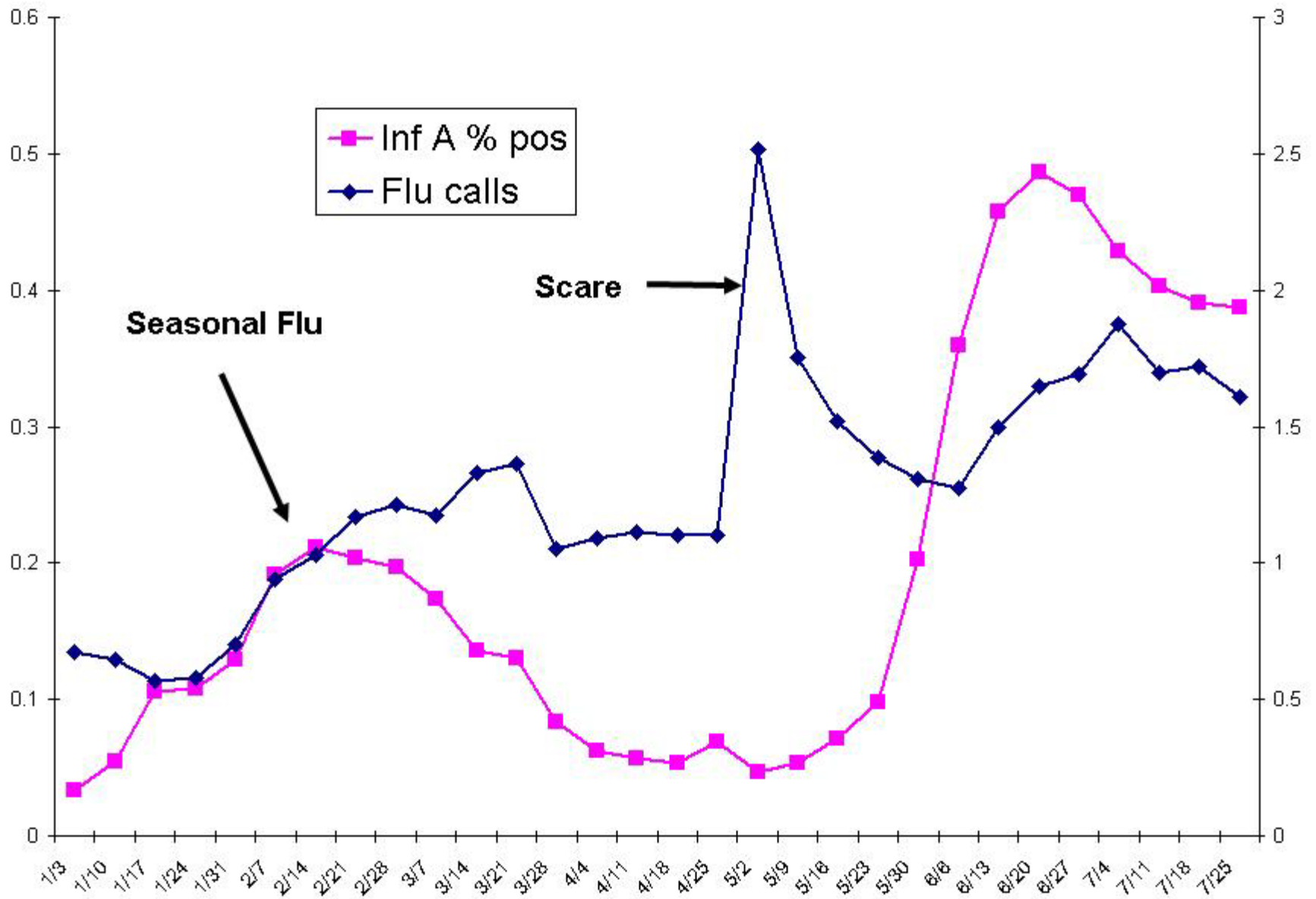
2009

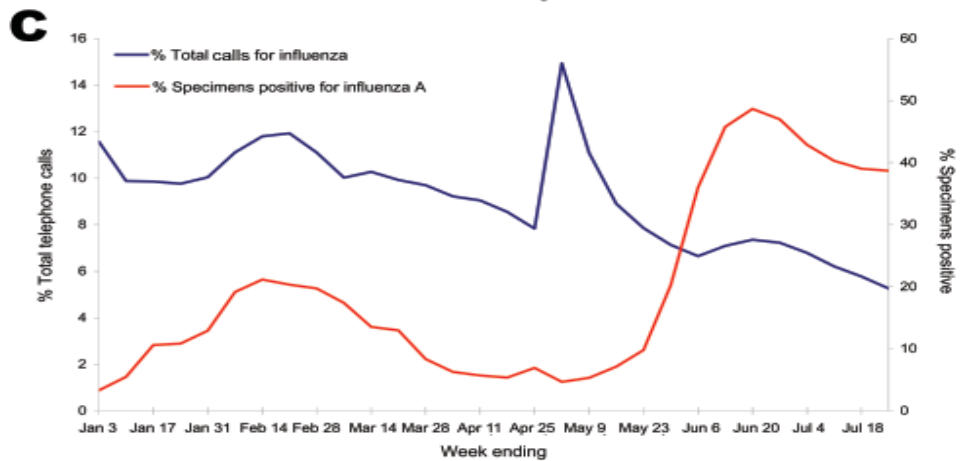
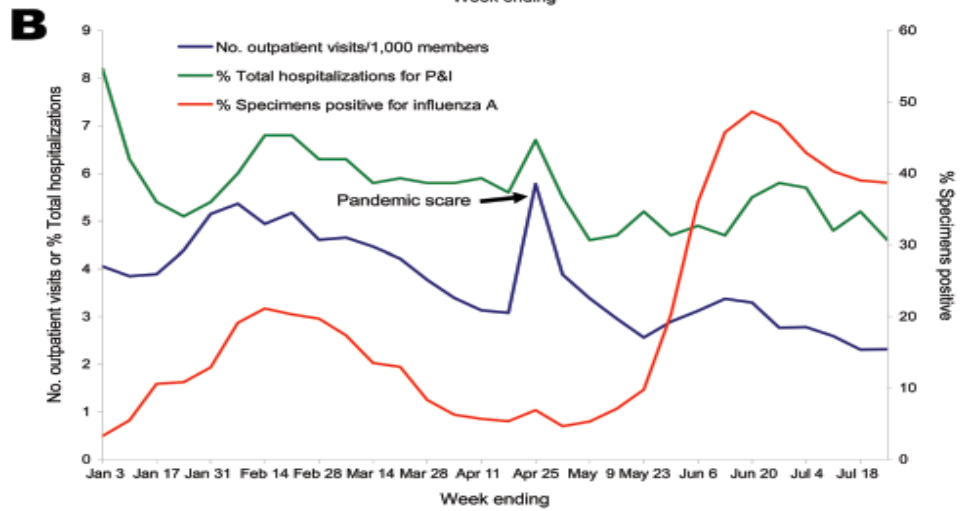
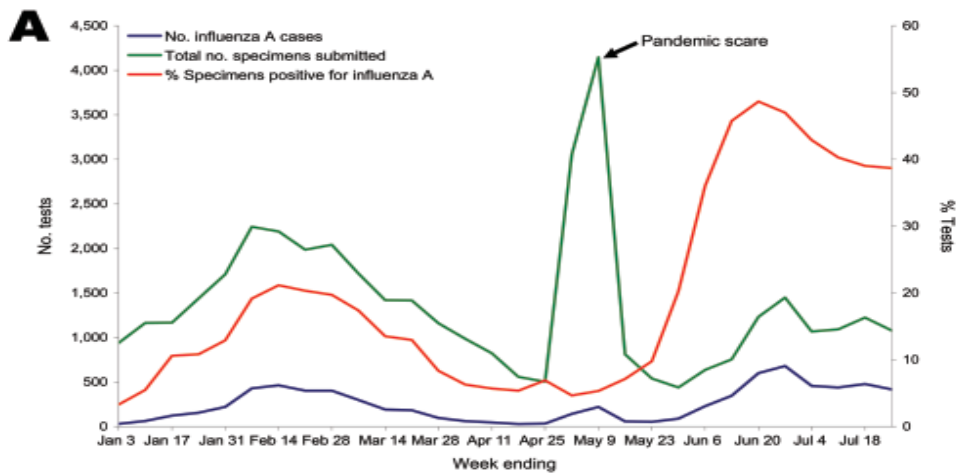


2009





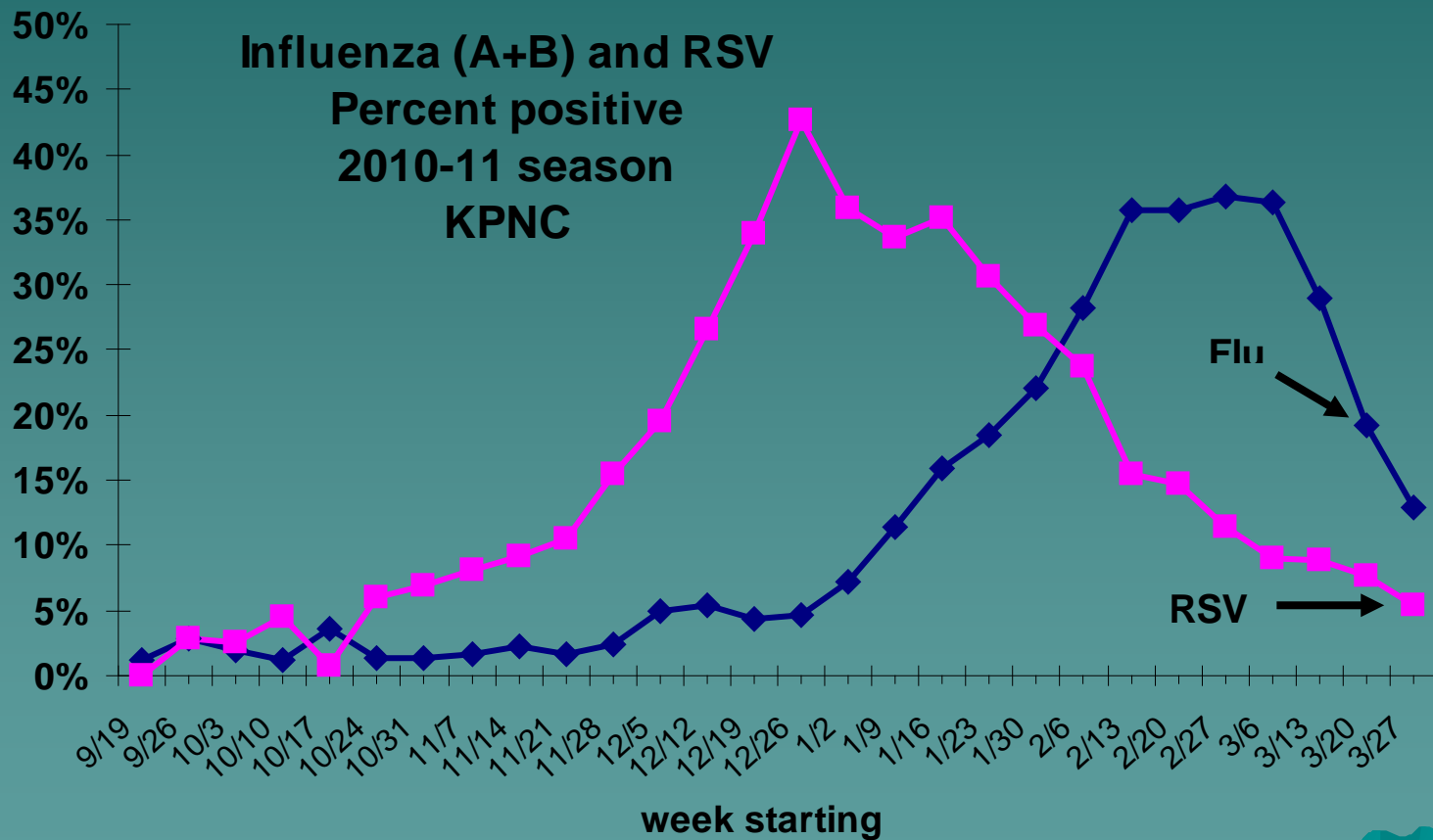




Flu surveillance 2010-11

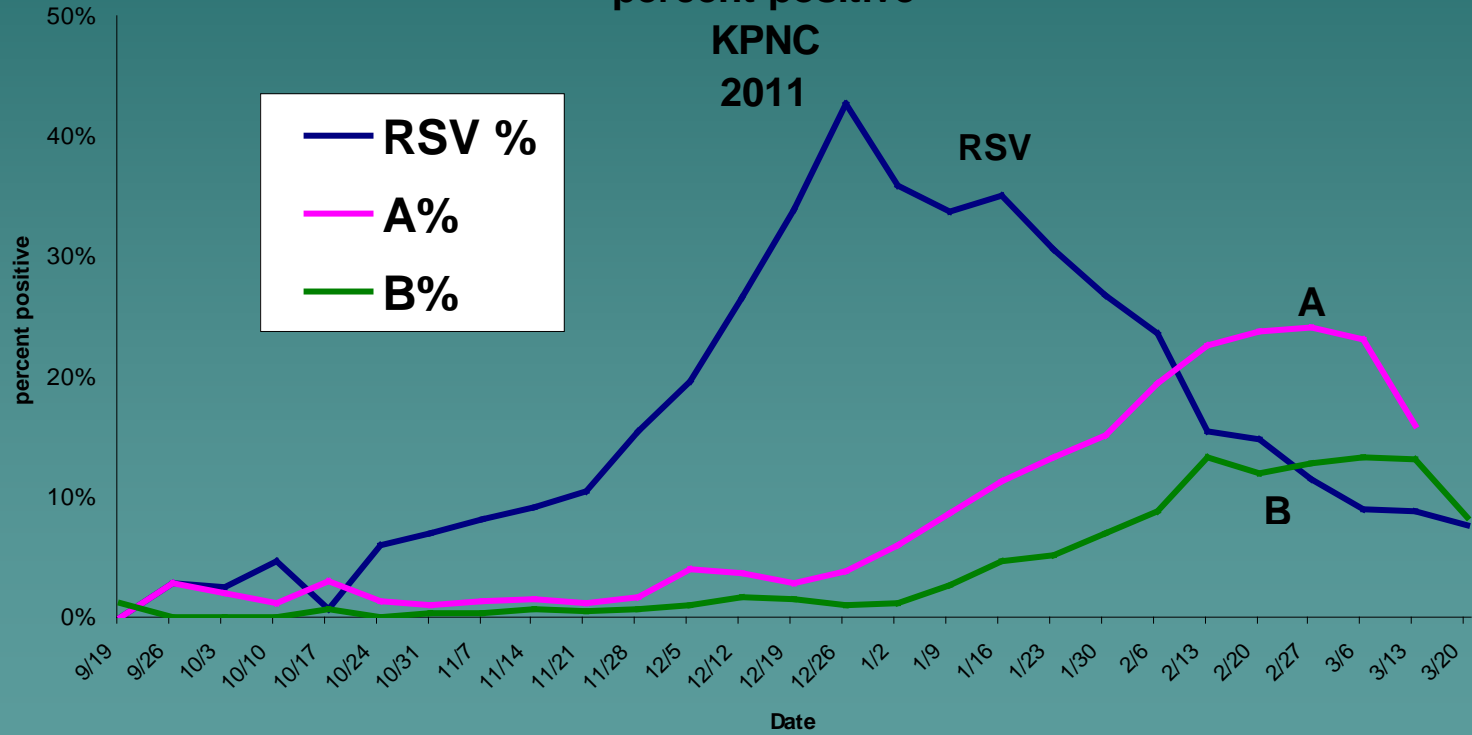
- ◆ KPNC Data

**Influenza (A+B) and RSV
Percent positive
2010-11 season
KPNC**

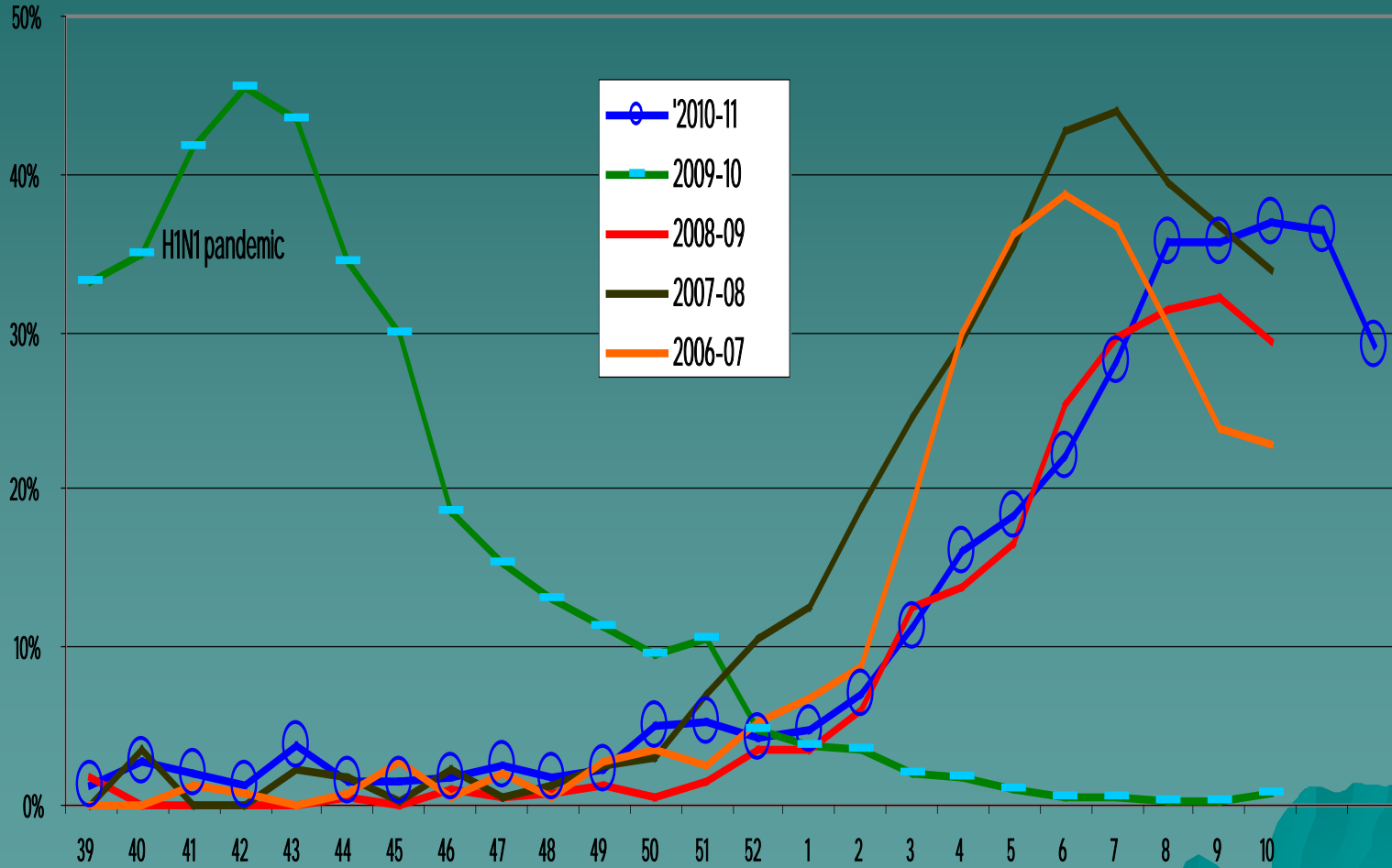


Flu A and B and RSV percent positive

KPNC
2011



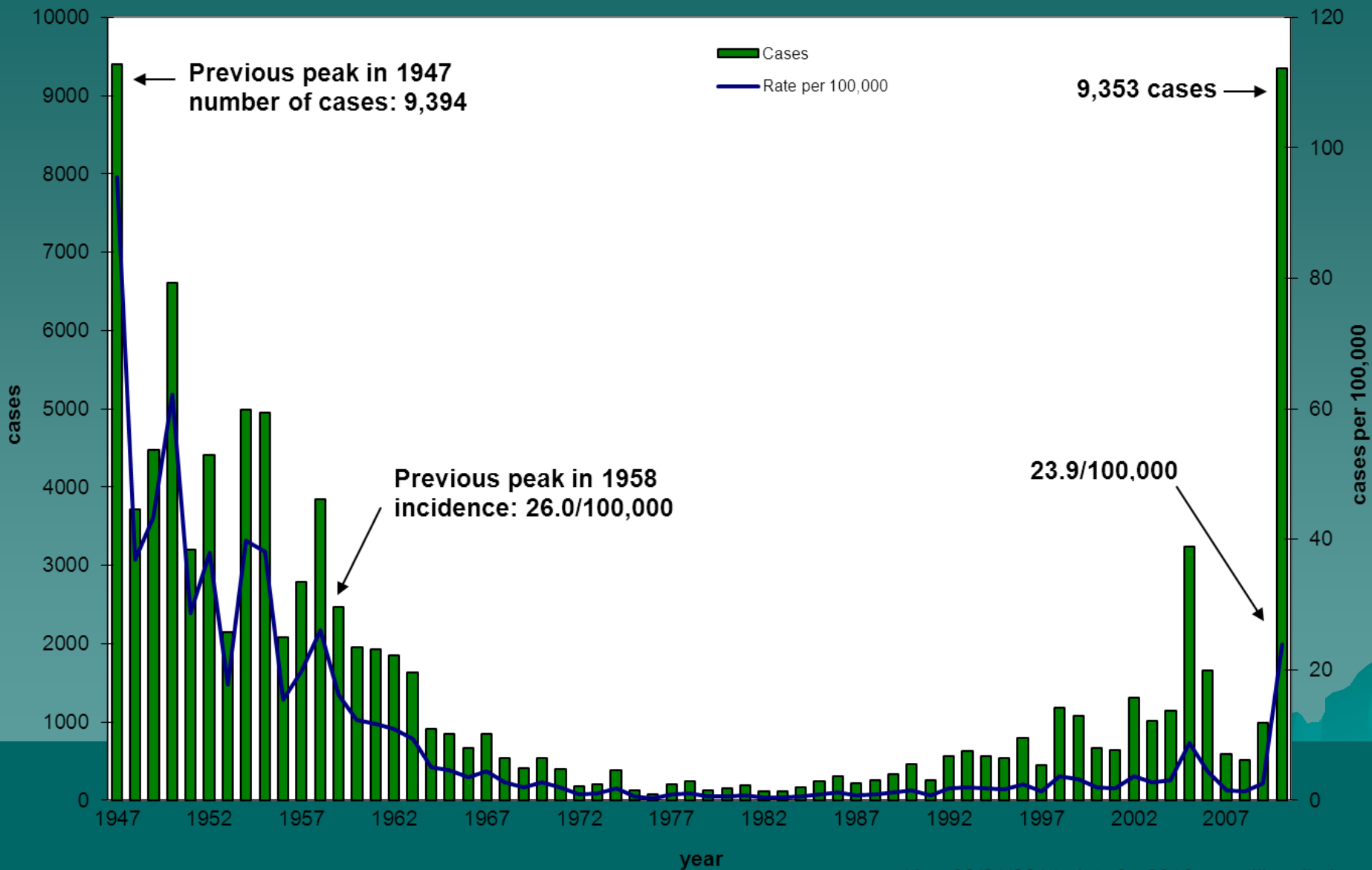
Percent Positive Flu A+B 2006 to present



Pertussis Surveillance

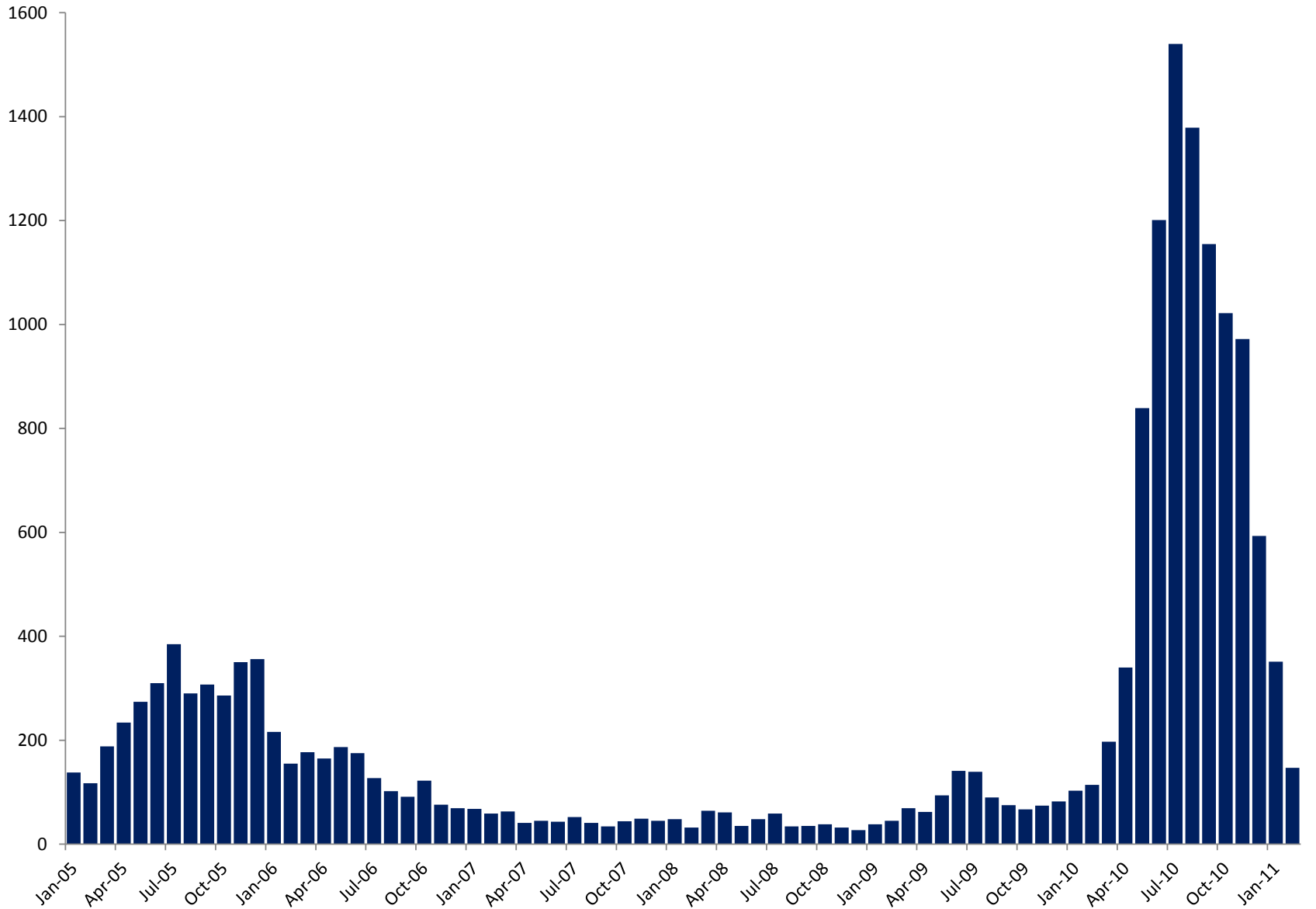
- ◆ State of California Data

Number of reported pertussis cases by year of onset -- California 1945-2010*



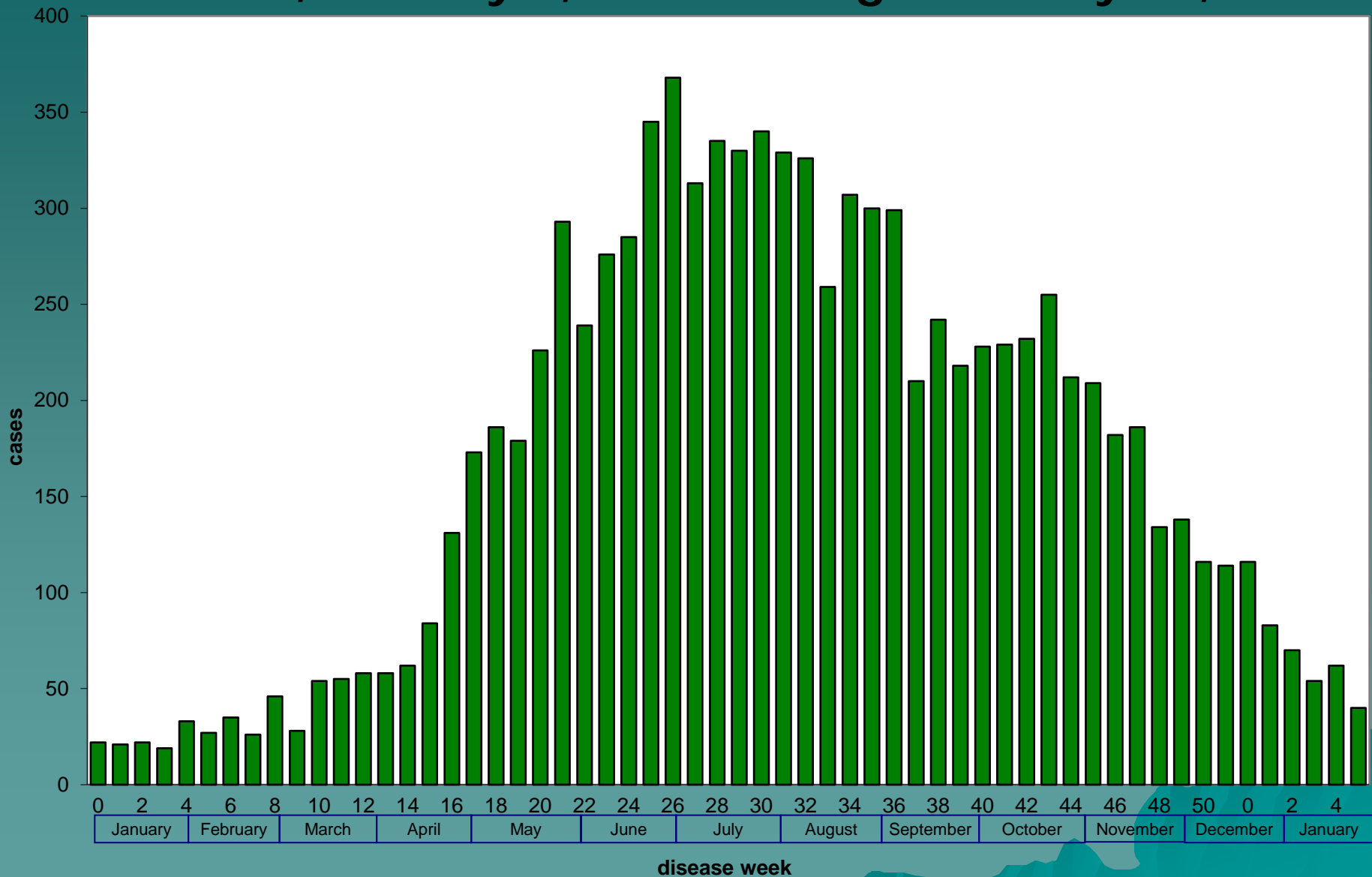
*As of 3/21/2011; data for 2010 are still preliminary

Pertussis cases by month of onset -- California, January 2005 - February 2011*



*Includes cases with onset through 2/28/2011 and reported to CDPH by 3/9/2011

Epidemic curve of pertussis cases* by week of onset -- California, January 1, 2010 through January 31, 2011



*Includes cases reported to CDPH as of 3/21/2011