



School-located Flu Vaccinations Proof of Concept Pilot

A partnership between Los Angeles School District (LAUSD), Los Angeles County – Department of Public Health (LAC-DPH), and Southern California Kaiser Permanente

Gale Ivie, MPH



Prologue

- ▶ “Influenza has been called “the last great plague of humankind” because it still poses a serious health threat to our nation and the world” (i).
- ▶ “Since school-aged children are the most important vector for community transmission of influenza” the objective is to reduce influenza-like illness (ILI) causing school absenteeism by offering school located vaccination clinics (ii).

▶ (i) Ryan, Kathleen A. "Target the Super-Spreaders." *Scientific American* (2012): 14. Print.

(ii) Glezen WP, Couch RB. Interpandemic influenza in the Houston area, 1974-76. *N Engl J Med*. Mar 1978;289(11):587-592



The Beginning

- ▶ The medical home is the primary site of influenza vaccine administration for children.
- ▶ School located vaccination programs allows the efficient immunization of larger numbers of school-aged children.
- ▶ Schools need assistance to achieve this objective and partnerships assist in that goal.





The Beginning

- ▶ A partnership between LAC-DPH, LAUSD, and Kaiser Permanente was formed to pilot this proof of concept.
- ▶ This partnership was felt to be a great opportunity for disaster preparedness and coordination of assets to offer and give flu vaccinations in an elementary school setting.



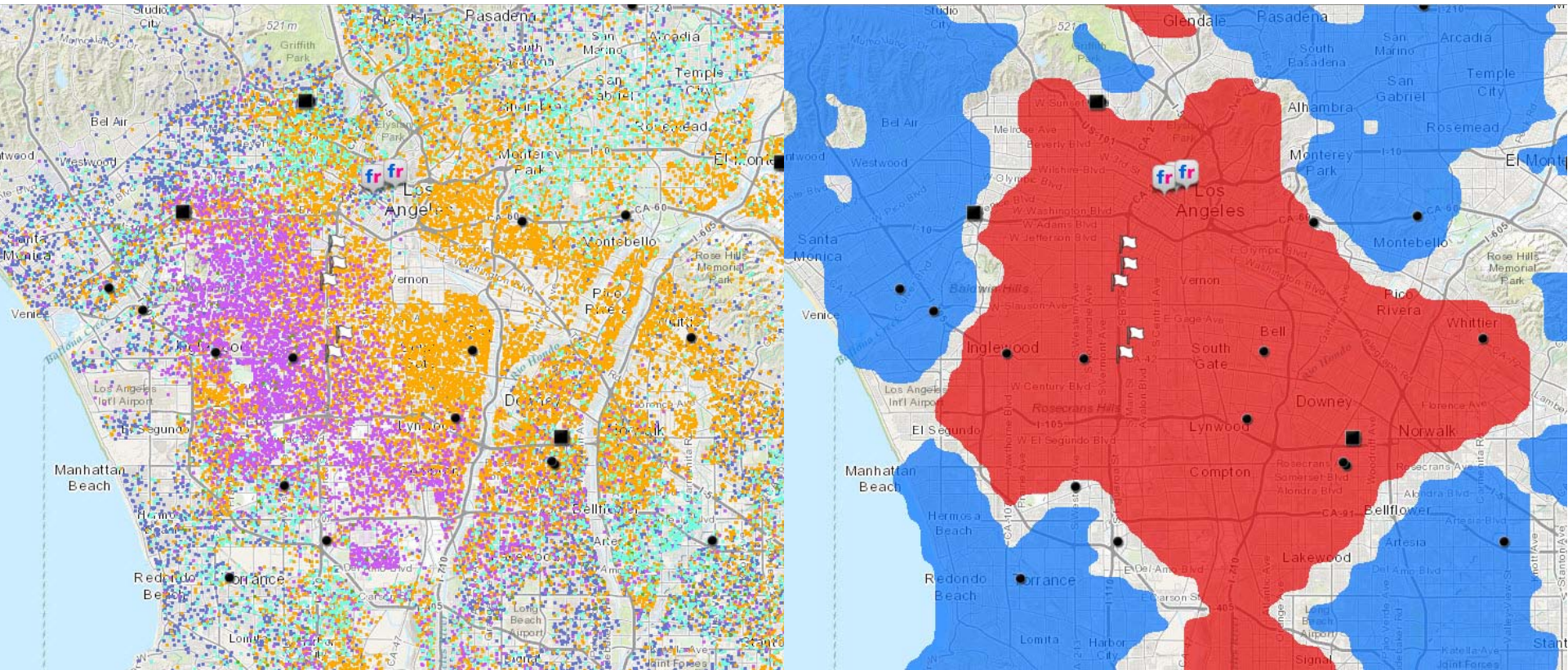


The Middle

- ▶ Flu vaccination risk mapping was done in Kaiser Permanente membership to identify health disparities.
- ▶ Kaiser Permanente membership data (by zip code) was cross-walked with LAUSD schools in a geographic location where low flu vaccination uptake had been identified.



School Located Vaccinations





The Middle

- ▶ The school administrators with the highest Kaiser Permanente membership were approached first as sites for this pilot.
- ▶ Five K-6 schools between 900 and 1,000 students enrolled with 90-150 faculty and staff were selected along the 110 freeway, north of the 105 freeway.





The Middle

- ▶ Kaiser Permanente provided all the consent and screening forms, VIS handouts, CAIR notification, school banners, and Save the Date flyers in English and Spanish in addition to flu vaccine for Kaiser Permanente members.





The Middle

- ▶ LAUSD provided the VFC flu vaccine for all VFC eligible students. The school nurses played an integral role in the distribution and screening of the consents prior to as well as on the day of the clinic.
- ▶ School nurses entered the flu vaccinations into CAIR and were responsible for the 2nd dose administration of flu vaccine in those students needing a second dose.





The Middle

- ▶ LAC-DPH provided the flu vaccine for those students who were either uninsured and/or insured by a health insurance company other than Kaiser Permanente.
- ▶ The Medical Reserve Corps Los Angeles provided the just in time training, work flow, and staff resources for the flu vaccine administration.





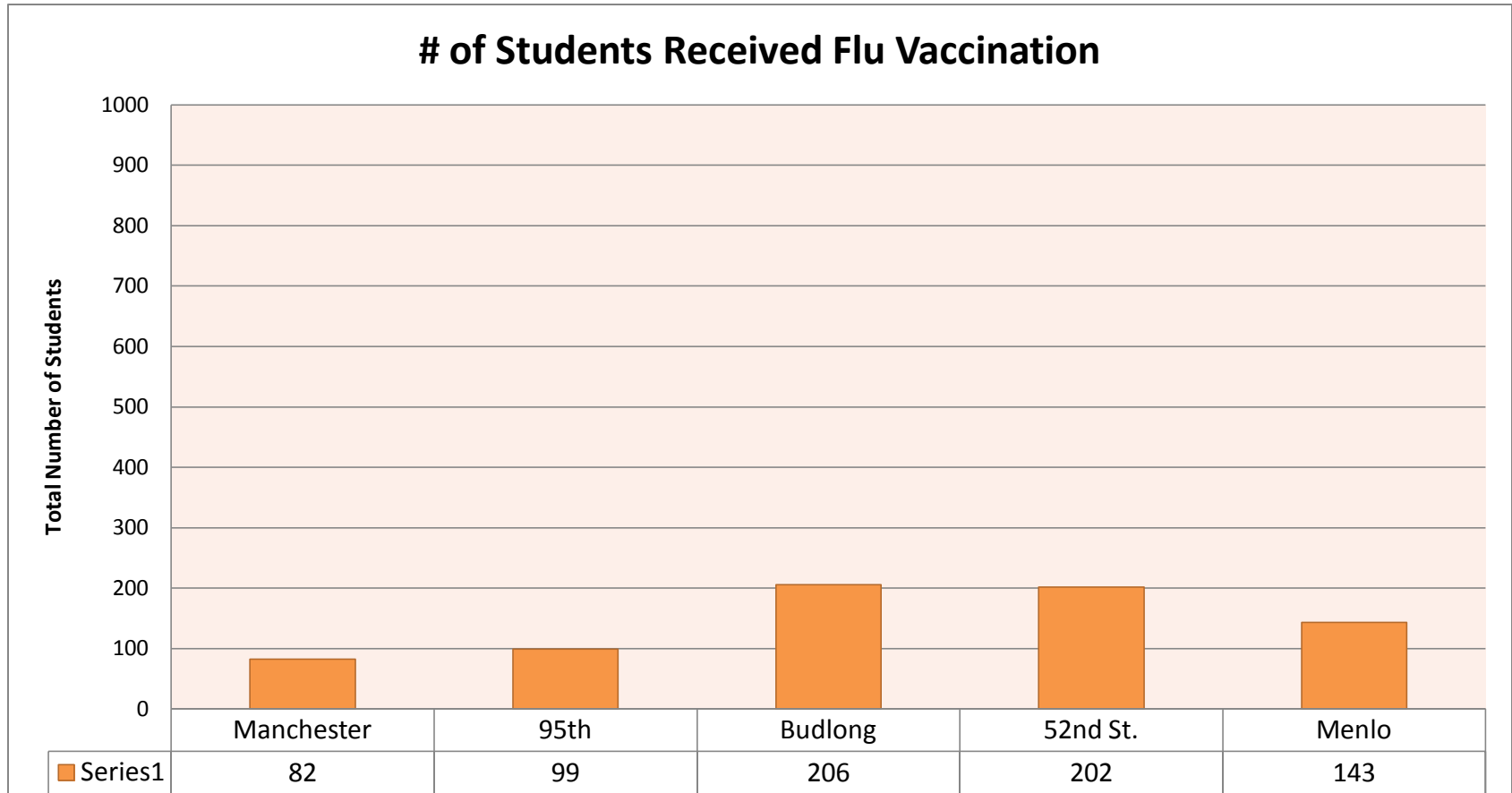
The Antagonists

1. Sufficient vaccine and staffing
2. LAUSD nursing staff time
3. Timeline restrictions (8/28/14 – 11/18/14)
4. Documentation requirements



The End

- ▶ The number of students vaccinated was approximately 732 out of 4,500 to 5,000 (about 15% overall).
- ▶ Several of these students had never received a flu vaccination.





The Sequel

- ▶ We will be returning to LAUSD in the 2014-2015 flu season to vaccinate additional schools.
- ▶ We're in conversation with Orange and San Bernardino counties to identify interested schools for school-located flu clinics in the coming flu season.

