



Successful Partnerships and the Power of Passion Teach Flu a Lesson

Presenter:

Enid K. Eck, RN, MPH

Kaiser Permanente



Population

- 16,786 elementary school students vaccinated. Flu vaccination uptake per school site ranged from a low of 2% to a high of 53%; mean value of 16.13%
- 4 counties (Los Angeles, Orange, San Bernardino and San Diego)
- 12 different school districts
- 161 elementary school sites; 27 schools in Los Angeles County; 91 schools in Orange County; 28 schools in San Bernardino County and 15 schools in San Diego
- Materials were translated into Spanish, Vietnamese and Korean
- Students were estimated to be 75-80% Medi-Cal eligible; but 85-90% Medi-Cal may be closer to reality

Effort to Decrease Health Disparities



- Internal risk mapping by Kaiser Permanente Southern California (KPSC), to identify below average flu vaccination rates in Kaiser Permanente (KP) membership, as well as underserved populations enabled us to hone and target specific geographic locations.

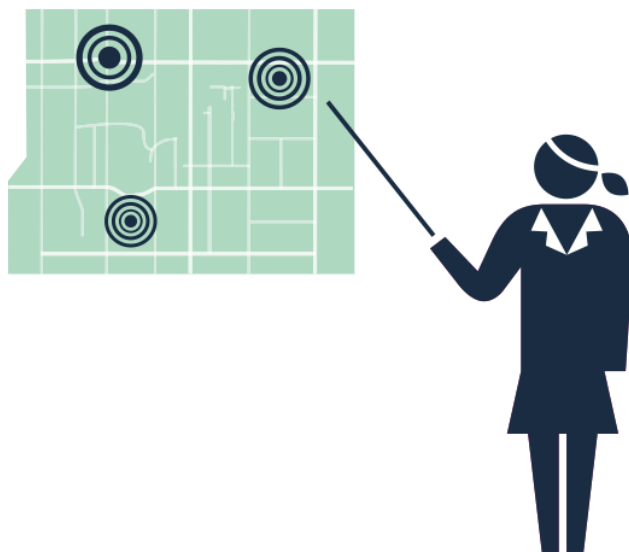
Partnerships

- Los Angeles County Health Department
- Los Angeles Department of Education
- Orange County Health Care Agency
- Orange County Department of Education (OCDE)
- San Bernardino Department of Public Health
- San Diego Department of Public Health
- San Diego Department of Education
- Kaiser Permanente Southern California

Recruitment & Engagement & Outreach

District Recruitment

- Risk maps reviewed to identify targeted geographic areas
- School districts within targeted geographic areas were identified
- District nurses invited by various County Leadership to a “meet and greet”
- Opportunity for *Teach Flu a Lesson* school based flu clinics was discussed



School Engagement

- PowerPoint was created and distributed to district nurses for use in discussion with school administration
- All invited school districts were interested and participated



Parent Outreach

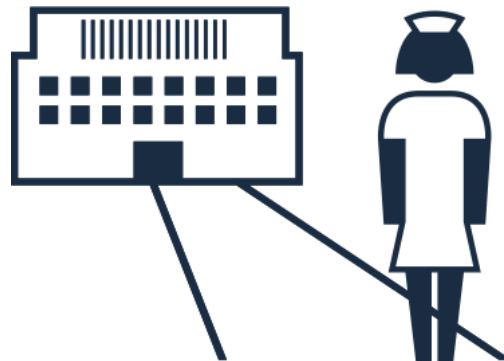
- Principals sent letter explaining voluntary flu vaccination program
- Letter accompanied consent and screening form
- *Teach Flu a Lesson* banners displayed in schools
- Back to school messaging was incorporated into general information
- Automated telephone messages from the school reminded parents



Roles & Responsibilities

School

- Prior to the clinic, distribution and initial screening of consents
- Total vaccine count; FluMist vs injectable for vaccine management
- Notification/reminder to staff and parents of flu clinic
- Securing site of flu clinic on school campus
- School nurse on-site day of flu vaccination clinic
- Assist with work flow and same day consent screening



State/County

- Provided flu vaccine for non VFC eligible or non KP member students
- Orange County Health Department provided initial support for vaccine storage



Kaiser Permanente

- Project leadership and on site volunteers
- Coordinated/scheduled school clinic staffing (student nurses)
- Student nurses will conduct secondary screening of consents on day of clinic
- Pre-event training and Just in time training, work flow, VFC vaccine and flu vaccine for KP members
- School clinic supplies
- Consent and screening forms, VIS handouts, CAIR notification form, school banners and Save the Date flyers
- Purchased small, battery-powered refrigerators with temperature monitoring and data logger technology

Vaccine

- Kaiser Permanente vaccine for Kaiser Permanente members
- Vaccine for Children (VFC) supplied vaccine for VFC eligible children
- State supplied vaccine for all other children
- Storage was at three of KPSC's VFC providers – Baldwin Park, Downey and San Diego Medical Center, Pediatrics Departments
- Management of flu vaccine per EZIZ instructions; separate coolers for VFC, County and KP vaccine



Clinic Logistics

- Morning clinics scheduled – 2-6 locations per day (on average)
- Supplies and vaccine transported by KP personnel
- Documentation – consents were pre-screened by school nurses, re-screened upon entry to clinic and screened again at point of service
- Documentation of immunization was made on consent form
- Vaccination information input by student intern (post clinic) into State provided Excel spreadsheet for eventual uploading into California Immunization Registry (CAIR) system
- Eleven Nursing program partners in Orange, Los Angeles, San Bernardino and San Diego counties

Challenges Internal and External

- The program experienced a catastrophic death, supply issues, grand larceny, terrorist attack, and a bomb threat...No locusts though, so we were good
- Delays in obtaining MOUs and distribution of materials
- Frequent schedule changes
- Variation in school nurse support- awesome to nonexistent

Program Impact

- Orange County Health Care Agency evaluating impact of SLV on rates of illness and absenteeism



Next Steps

- Exploring potential for electronic/virtual consent forms
- Assure MOUs signed and clinic dates scheduled prior to end of school year
- Optimizing partnerships between nursing programs and school districts
- Formalizing student nurse training and certification for vaccine administration
- Formalizing rules of engagement for schools and program participation
- Exploring potential linkage with Kaiser Permanente's Thriving Schools Program