

# Tracking Improvement in Immunization Up-to-Date Rates and Racial/Ethnic Disparities among Two Year-olds in South Los Angeles.

Authors: Lizz Romo, RD, Jennifer  
Chiprich, PhD, Terry Silberman,  
DrPH and Diane Gaspard, RD, MA.

# Background

**South Los Angeles Health Projects (SLAHP) is a community-based unit of the Los Angeles Biomedical Research Institute at Harbor-UCLA Medical Center**

## SLAHP Programs:

WIC Program

Loving Support

South LA Best Babies Collaborative

Little by Little

Childhood and Prenatal Immunization

# Background

## ▶ WIC Program

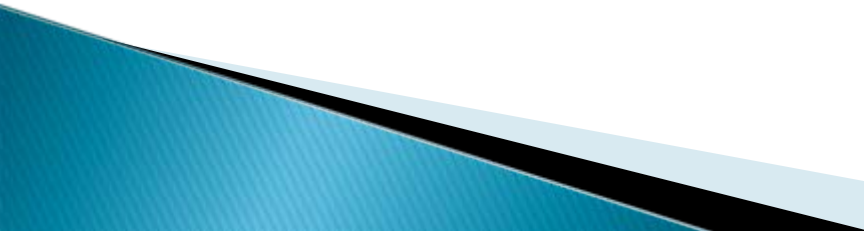
- Federally funded → States
  - CA = 84 WIC agencies
    - LA County = 7 WIC Agencies
      - LA BioMed WIC Program = 2<sup>nd</sup> largest

# Background

- ▶ LA BioMed WIC Program
  - Caseload = 96,000 participants
  - Birth cohort = approx 20,000 per year
  - Approx 90% Hispanic, 7% African American
  - 11 WIC Centers

# Childhood IZ Services

SLAHP has conducted childhood IZ promotion at WIC since the early 1990's.


- 1993 manual IZ assessment, tracking & referral
  - 1997 computerized assessment and referral using in-house tracking system
  - 2009 started phasing in CAIR
- 

# Childhood IZ Services

- ▶ IZ Assessment, Tracking & Referral occurs at WIC enrollments, mid-certifications and re-certifications until up-to-date for primary series
  - Starting at birth/infant enrollment
  - Approx every 6 months
- ▶ Under-immunized children receive additional follow-up
  - Every 1-2

# Childhood IZ Services

## Process

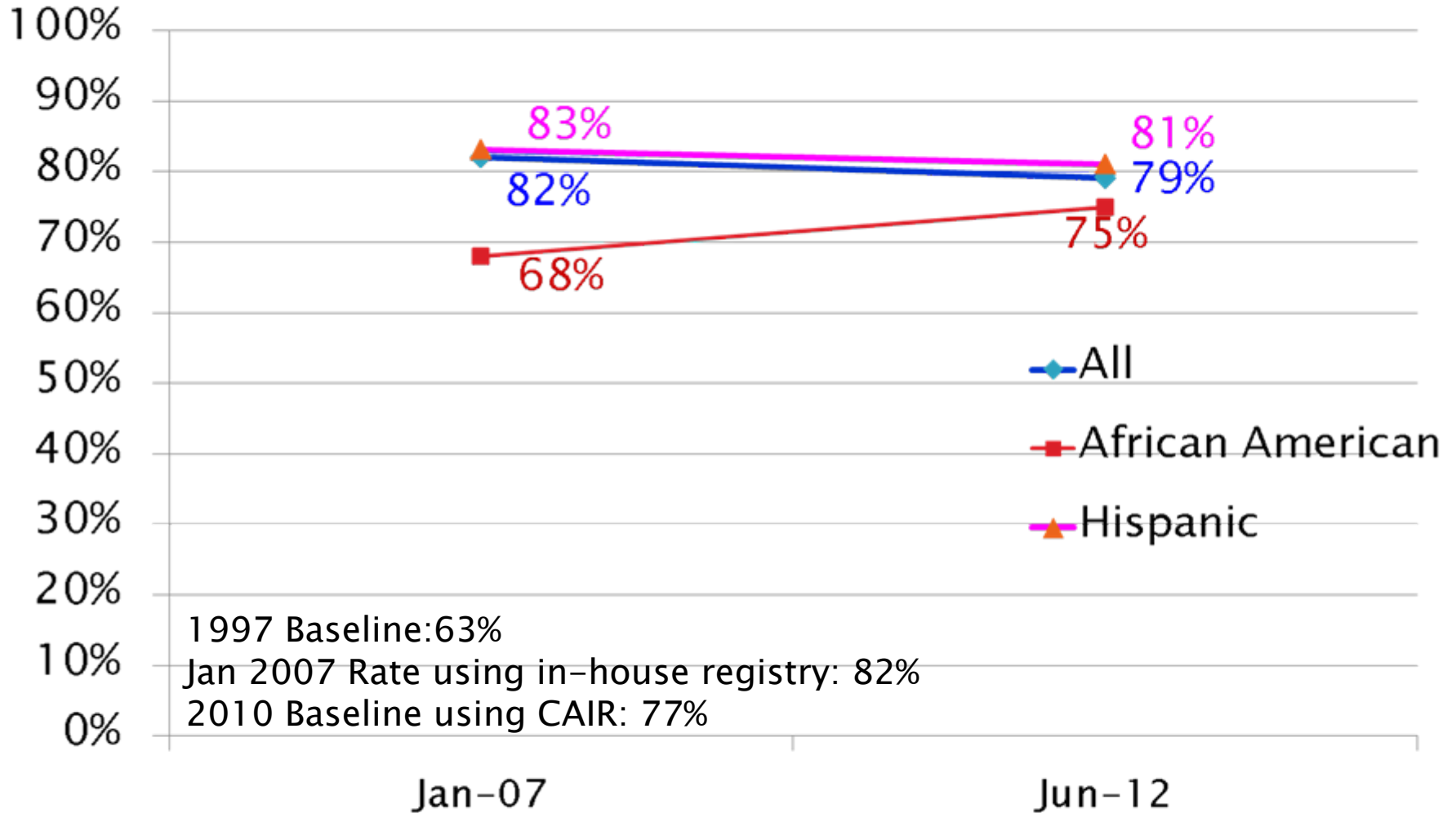
- ▶ WIC requests child's immunization record
  - ▶ Staff enter IZ information into CAIR
  - ▶ Discuss CAIR printout with parent
  - ▶ Refer to medical home or provide referral
  - ▶ For under-immunized children, follow-up in 1-2 months
- 

# Up-to-Date Rates for 24 month old WIC Children


- ▶ In-house Registry: Baseline in 1998 at 63%, increased to 80% by 2004
- ▶ Post Initiation of CAIR
  - Receive Data set from CAIR
  - Remove inactive clients
  - Match to WIC data for R/E status
  - Run report in CoCASA
- ▶ New baseline with CAIR in 2010 at 77%



# Up-to-Date Rate 24 month old WIC Children



# Quality Assurance

- ▶ Training and quality assurance is conducted regularly
  - ▶ Supervisors and staff report that regular reviews and feedback are valuable
  - ▶ Performance incentives are offered to sites meeting goals
  - ▶ Assurance of quality allows for confidence in implementation and results
- 

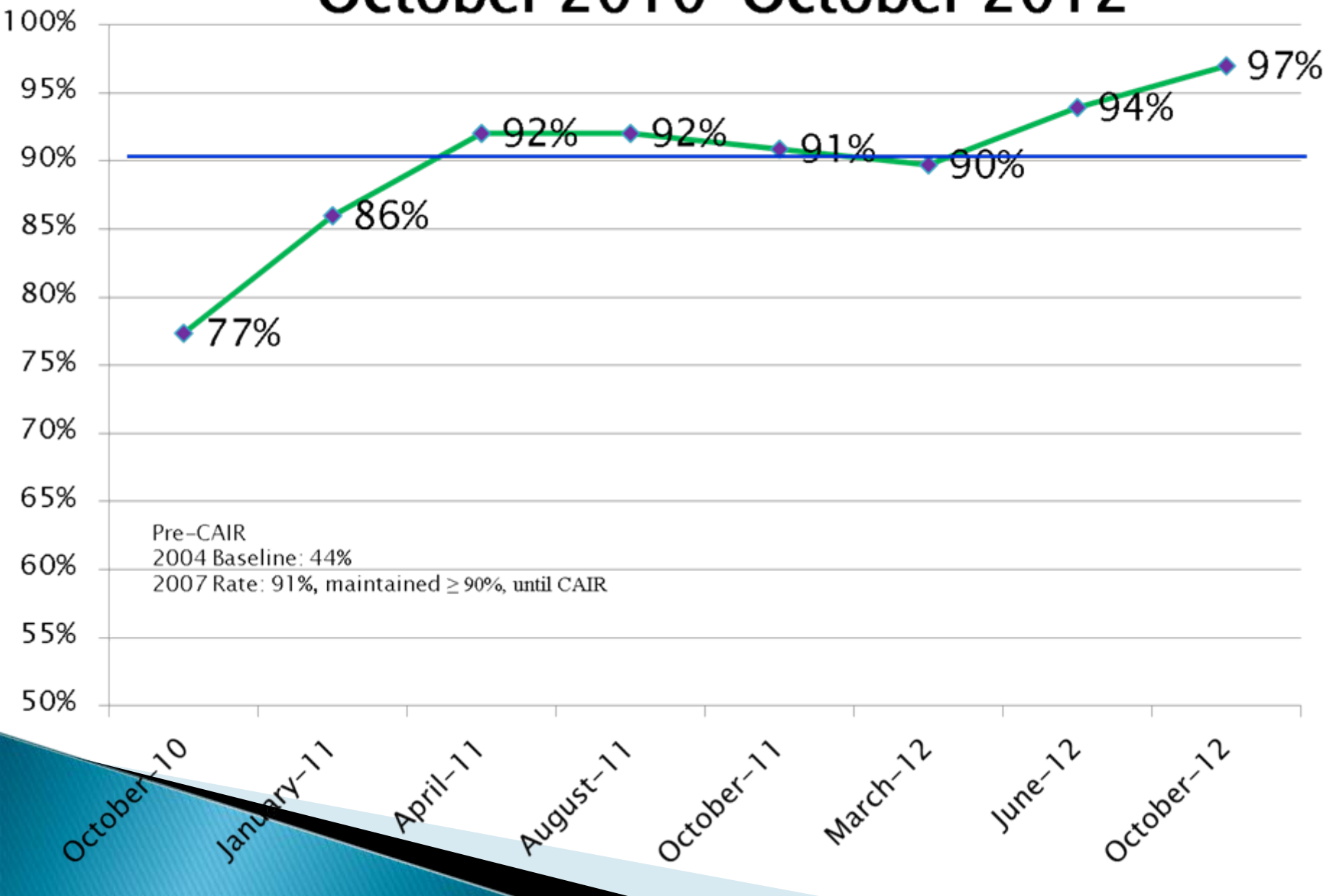
# Quality Assurance Reviews

## ▶ Follow-up QAR

- Protocol: overdue → f/u in 1-2 mo + comment in WIC system
- CAIR “Overdue List” report
- Verify compliance in WIC System (ISIS)
  - ✓ for appropriate follow-up comment
- Previously conducted 6x/year, now quarterly

# Follow-up Protocol Compliance Rate

## October 2010–October 2012

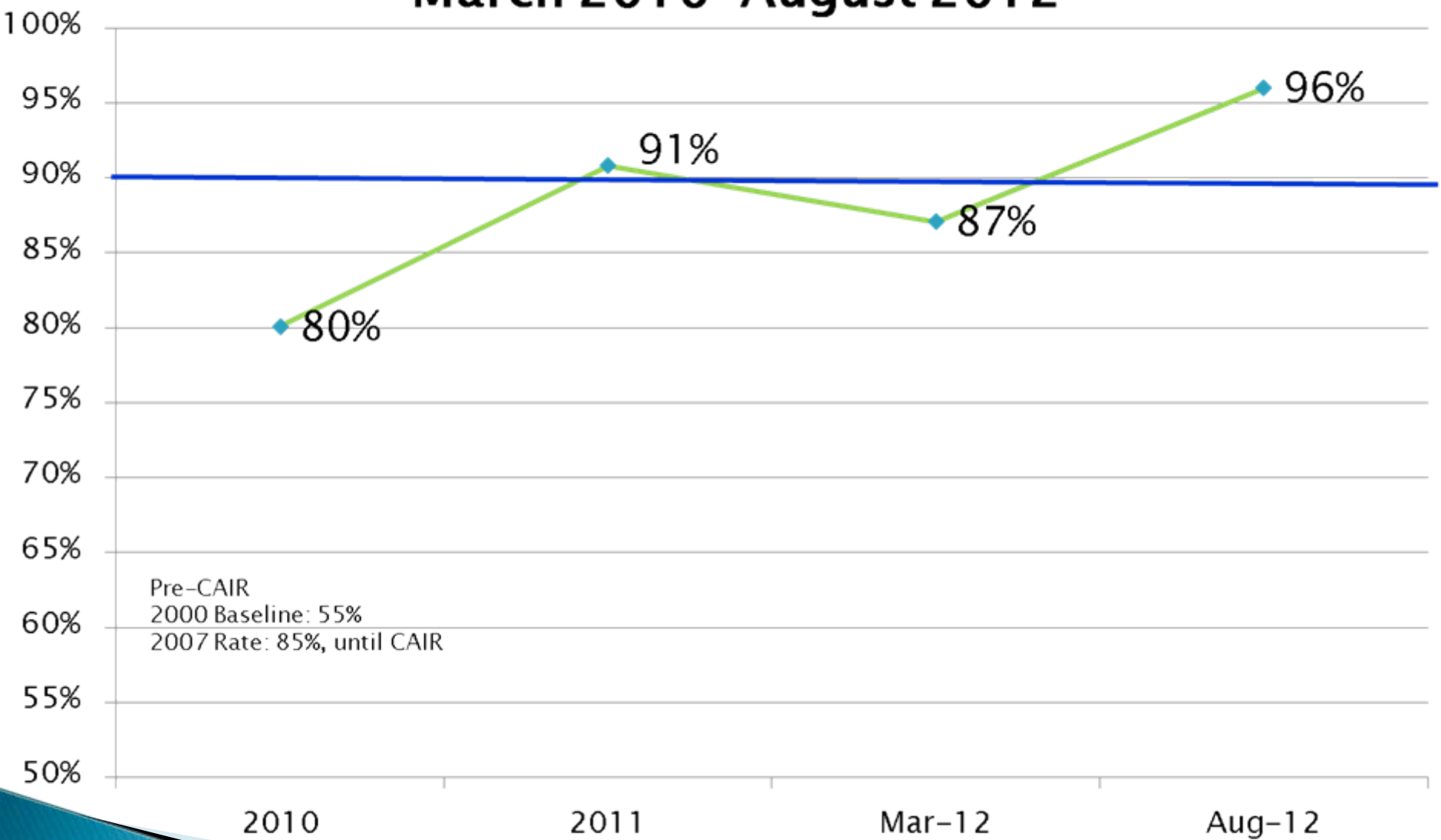


# Quality Assurance Reviews

- ▶ Immunization Assessment QAR
  - Protocol → conduct assessments @ enroll, midcerts, recerts
  - WIC Visit report obtained from ISIS
    - Randomly select children from list
  - Verify IZ assessment done in CAIR
    - ✓ WIC Status date in CAIR

# Immunization Assessment Completion Rate

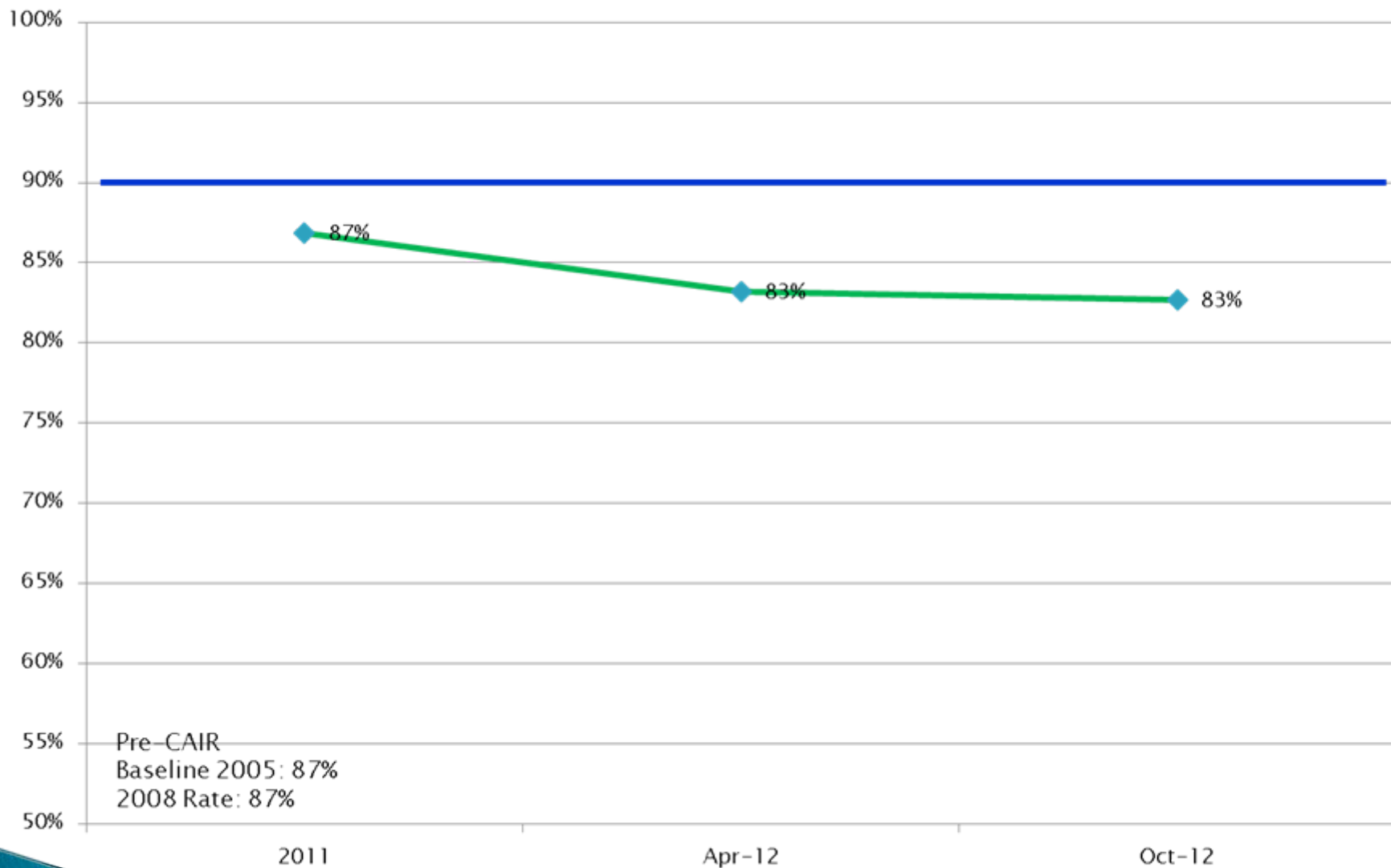
## March 2010–August 2012



# Quality Assurance Reviews

- ▶ Immunization Data Entry Accuracy QAR
  - Protocol → enter all unique dates into CAIR
  - Site staff copy 50 IZ records
  - CAIR “Transcribed Shots” Report
    - Lists exact dates per child entered by each WIC staff on selected dates
  - Transcribed shots vs shots on IZ record
  - Labor intensive review

# Immunization Data Entry Accuracy Rate 2011-2012

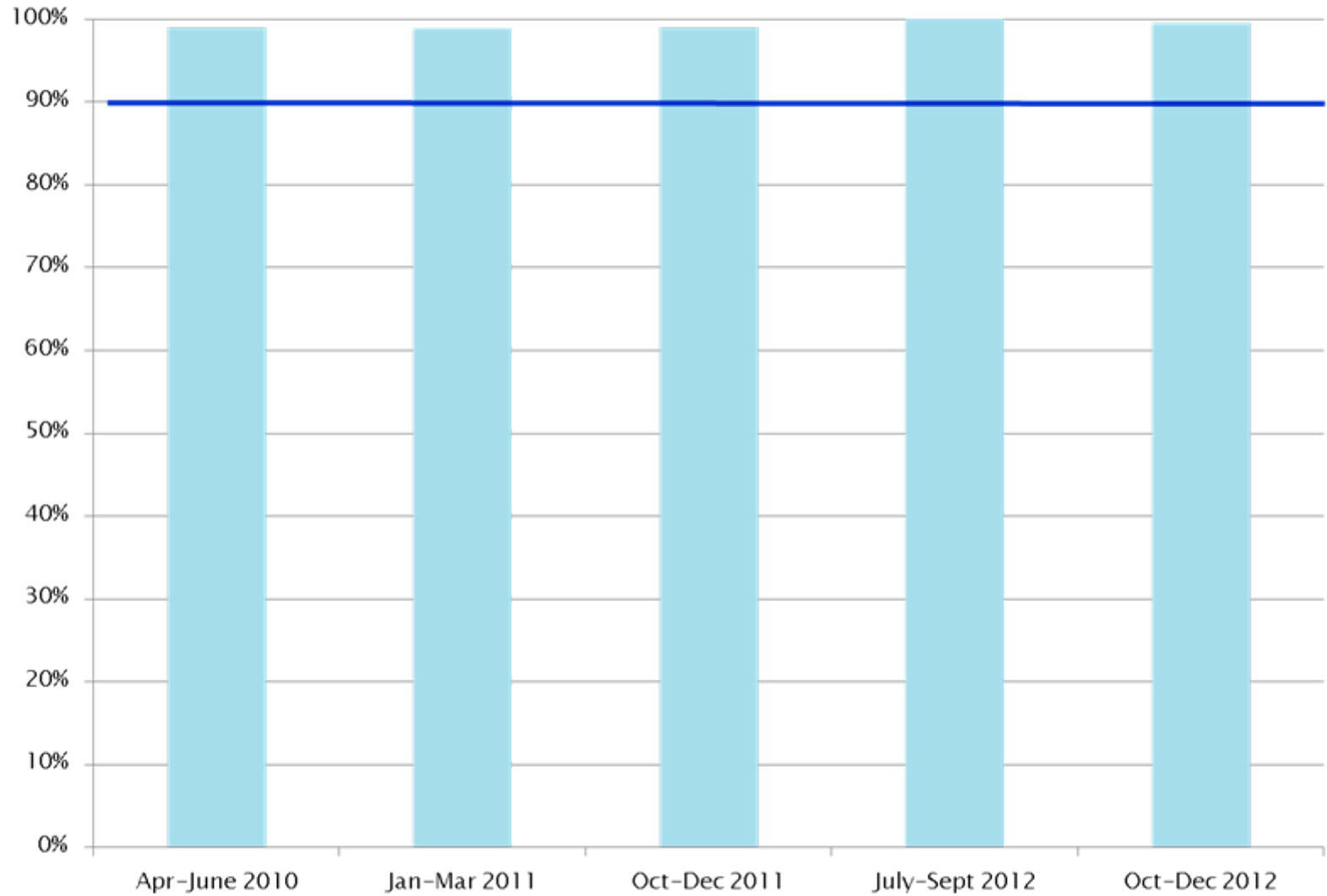





# Quality Assurance Reviews

- ▶ WIC Children Have a Record in CAIR
  - Protocol → WIC staff ensure record exists in CAIR for WIC children under 3
  - CAIR “Records Read” report
  - ISIS report “children in WIC”

# SLAHPWIC 0-3 Year Olds in CAIR 2010-2012



# Summary

- ▶ SLAHP WIC has a robust childhood immunization tracking and referral program
  - ▶ Up-to-date rates have increased to and maintained at about 80%
  - ▶ Quality assurance reviews are beneficial for
    - revealing need for remedial training
    - providing feedback on areas of improvement
    - recognition of staff for meeting goals
    - Obtaining optimal implementation and execution of project activities
- 

# Future Plans

- ▶ **Improvement of Data Entry Accuracy**
  - Decrease errors in entry of WIC ID into CAIR
    - Will improve data matching for R/E status
  
- ▶ **Immunization Process Time Study**
  - Streamline process
  - “Package It” to make available for other interested WIC agencies

# Contact Information

- ▶ Lizz Romo
- ▶ [lromo@slahp.org](mailto:lromo@slahp.org)
- ▶ LA BioMed/South LA Health Projects
  - ▶ 323.757.7244 ext. 231

## Acknowledgements

- ▶ These interventions were partially supported by the California Department of Public Health Immunization Branch, and the Centers for Disease Control and Prevention (CDC) under the REACH 2010 Initiative
- ▶ This project receives institutional support from the Los Angeles Biomedical Research Institute at Harbor-UCLA Medical Center